

# Radford and Park

## Area Committee Executive Summary

Unofficial December 2012 Data

# Ward priorities – Progress update

Theme	Priority	Key Actions
<b>SAFER</b>	<ul style="list-style-type: none"> <li>• Residents safety in neighbourhoods</li> <li>• St Peter's area – ASB / street drinking</li> <li>• Lenton Triangle and Park – reducing burglaries</li> </ul>	<p>Visible, high profile presence across 4 Beat areas</p> <p>Targeted patrols</p> <p>Operation Country / crime advice to students – Student Fortnight of Action</p>
<b>NEIGHBOURHOODS</b>	<ul style="list-style-type: none"> <li>• Managing waste - fly tipping, bins, alleyways</li> <li>• Control of derelict / vacant sites</li> <li>• Promote and develop resident groups</li> </ul>	<p>Hartley Road alleyway, Blooms Grove Industrial estate / Ilkeston Road</p> <p>High Rise demolitions, Forest Mill site</p> <p>Sustain groups in each Police Beat</p>
<b>FAMILIES</b>	<ul style="list-style-type: none"> <li>• more activities for children and youth</li> </ul>	<p>Develop inclusive activities for children aged 0 -19 across Radford communities, through partnership and use of Councillor Ward budgets.</p>
<b>HEALTH</b>	<p>Decade of Better Health (DOBH) – broad priorities covering strokes, diabetes, Cardio Vascular Disease (CVD). Links also to obesity, alcohol and drugs misuse, smoking</p>	<p>John Carroll Leisure Centre – activities classes for older people and full range of fitness classes</p> <p>Improve open spaces / play areas through Area Capital</p>
<b>WORKING</b>	<ul style="list-style-type: none"> <li>• training and learning opportunities to help people gain access to employment</li> </ul>	<p>Promote and encourage use of community space for work clubs such as Lenton Job Club, Derby Road.</p>

# Community Engagement

## Ward Walks

Area/Estate	Date/Time	Meeting Point
The Park (Clumber Street North, Newcastle Drive, Western Terrace)	13 December 2012 (2.30pm)	Tennis Drive
Lenton Triangle (Derby Road)	17 January 2013 (2.30pm)	Derby Road / Kimbolton Avenue
Radford West (area tbc)	14 February 2013 (2.30pm)	Hartley Road / Addington Street

## Community Meetings

Group	Date	Venue
Radford and Leen Tenants and Residents Association (TRA)	15 January      16 April 19 February    21 May 19 March        18 June (Third Tuesdays at 6.45pm)	St Peter's Church, Hartley Road / Churchfield Lane, Radford
BRAMTRA (Bramcote estate tenants group)	Thursday 7 March: 6.00pm	Plough Inn, St Peter's Street, Radford
Radford West Residents Group	Tuesday 12 March: 4.30pm	Mellers Primary School, Norton Street, Radford

# Community Engagement

## Events Delivered

Event	Lead Partners	Date/Time	Venue
Area 4 Christmas tree event with local primary schools, residents and partner organisations	Neighbourhood Services	22 November 3pm – 5.30pm	Canning Circus
Budget consultation (phase 1)	Neighbourhood Services with Portfolio Holder Lead (Councillor Liversidge)	26 November 6pm – 7.30pm	PRIMARY Arts, 33 Seely Road (former Douglas primary sch)
Wallen Street play area –consultation	Councillors / Neighbourhood Services	27 November 11am	Wallen Street / Ben Street
Walk on Wildside – (childrens activities)	Groundwork Greater Nottingham	6 December 2pm -4pm	Radford Primary School, Denman Street West
Tree planting	City Council – Tree Services Mellers Primary – Eco group	11 January 1pm	Bobbersmill play area, off Maun venue
Sandfield site – public Consultation	UK Regeneration	23 January 2pm – 3.30pm / 6.00pm – 7.30pm	Lenton Methodist Church, Derby Road

## Future Events and Activities Planned

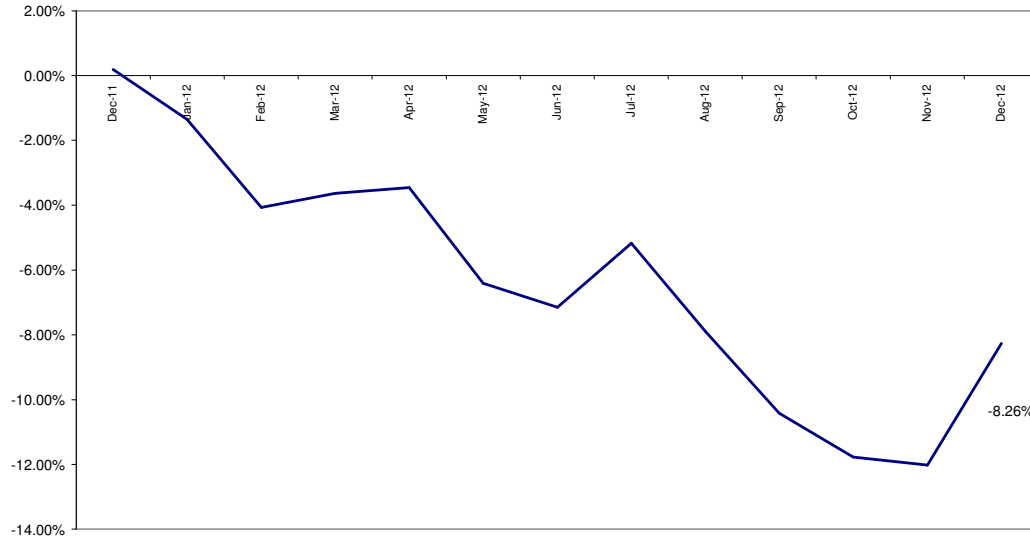
Event	Lead Partners	Date/Time	Venue
Budget consultation / Leader Listens (Phase 2)	Neighbourhood Services / City Council Leader – Councillor Collins	4 February 7pm-8.30pm	Radford Primary School
Area 4 Committee	City Council	27 February / 5.30pm	Loxley House

# Finance

- **Ward Councillor Budgets**  
Total amount allocated this period £26,448  
Budget remaining unallocated £18,794 (inc. of 2012-2013 allocation)
- **Area Capital Fund**  
Total amount allocated this period £135,628  
Budget remaining unallocated £110,211 (inc. of 2012-2013 allocation)
- **Others – Section 106, NCH Environmentals, Other Funding**  
None this period

# Crime

All Crime in Radford & Park -  
% Change over 2010/11 Baseline (Rolling 12 Month)



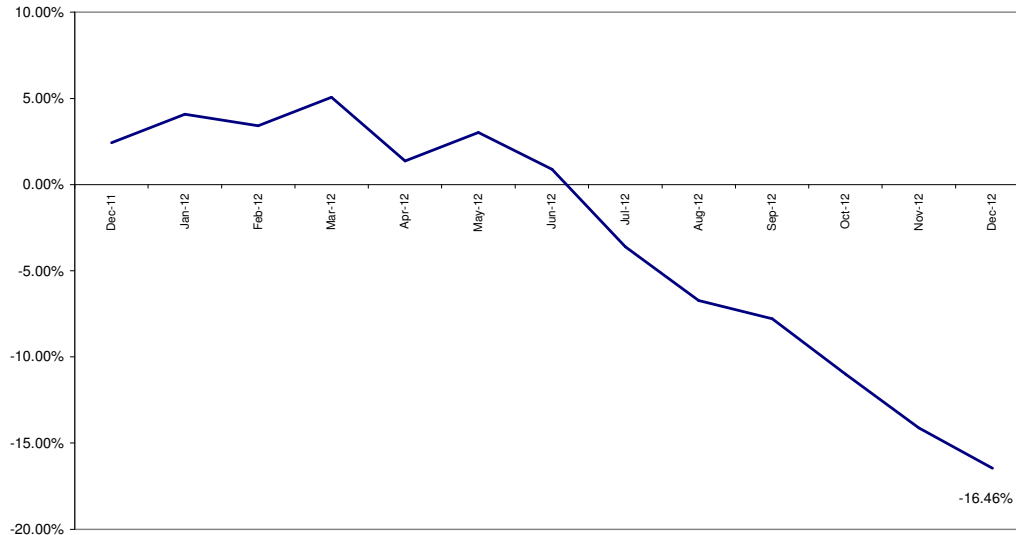
Red*	62 more crimes	+66.67%
Amber		
Green		

\*Refers to December 2012 compared to December 2011

- In December 2012 (compared to December 2011) All Crime in Radford and Park was up 66.67% (62 crimes, see above right RAG rating). A number of wards have experienced large percentage increases this month, and it is felt that this might be partly attributed to the unusually low crime levels observed in December 2011.
- The above graph compares volume of All Crime over the previous 12 months to a 2010/11 baseline. On this measure performance has worsened over the past month, but there has still been an overall reduction.
- Year to date (compared to the corresponding period last year) All Crime in the ward is down 6.18%.

# All ASB

All ASB in Radford and Park -  
% Change over 2010/11 Baseline (Rolling 12 Months)



Red		
Amber		
Green*	24 fewer calls	-34.78%

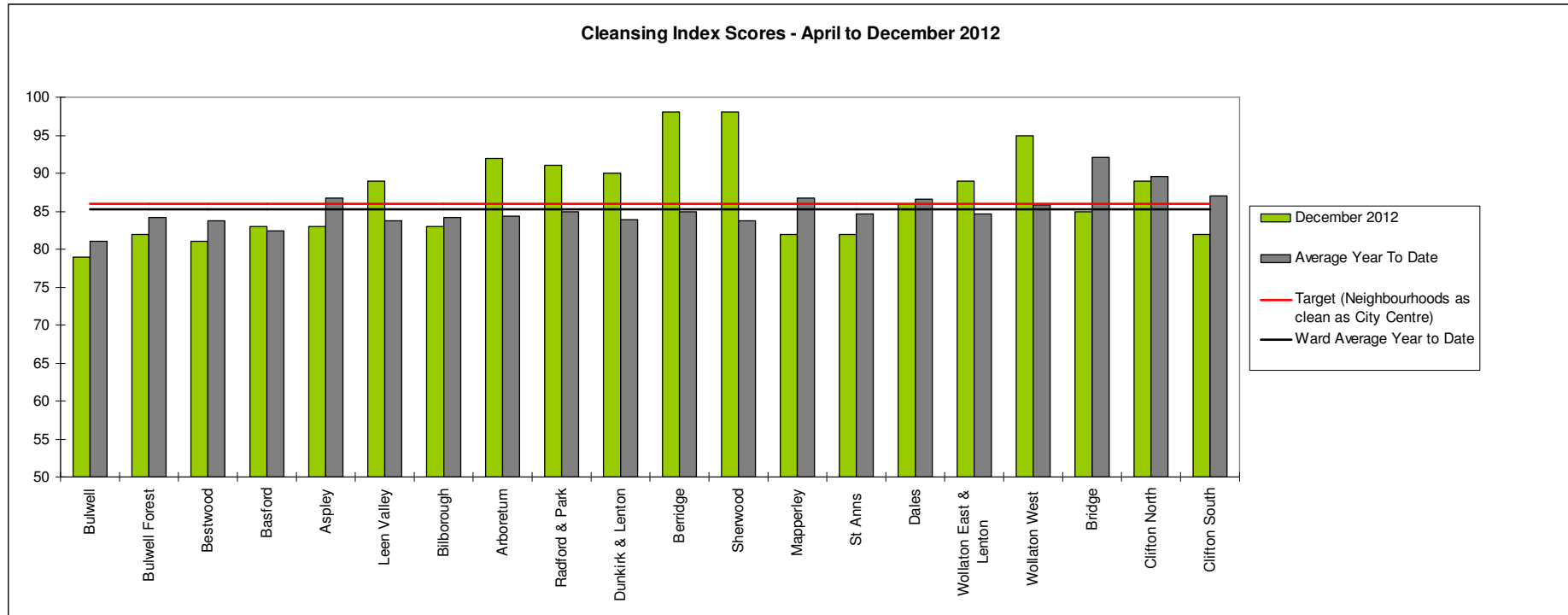
\*Refers to December 2012 compared to December 2011

- In December 2012 (compared to December 2011) All ASB in Radford and Park was down 34.78% (24 calls, see above right RAG rating). This exceeds Divisional performance on this measure.
- The above graph compares All ASB in Radford and Park over the previous 12 months to a 2010/11 baseline. On this measure the ward's performance is improving steadily.
- Year to date (compared to the corresponding period last year) All ASB in Radford and Park was down 26.47%.



# Cleanliness Index

This graph shows the position of your ward compared to other Wards



**The “neighbourhood as clean as the city centre” benchmark target on cleanliness is to achieve a score of 86% in every ward. The 86% target is shown in red in the above graph.**

To calculate the Cleanliness Index (CI) an agreed number of transects are surveyed across an area covering a range of land types. Each site surveyed is awarded a cleanliness grade based on a 7 point scale from A to D where Grade A: – no litter, and Grade D: - heavily littered. The maximum possible score of 100 is achieved when all sites achieve Grade A.

The Code of Practice for Litter and Refuse (COPLAR) requires councils to strive to reach an ‘acceptable’ standard of cleanliness (grade B or better) across the Council area. Grade A is the ultimate goal and is how a site should be immediately after sweeping but is almost impossible to maintain for any length of time. For example, a grade A site is completely free of litter – one cigarette butt takes it down to B+.

To achieve the manifesto commitment of Neighbourhoods as clean as the City Centre a target of 86 is required as that was the CI for the City Centre in May 2011. To give some context if all areas surveyed achieved a grade ‘B’ standard, this would equate to a cleanliness index of 67.

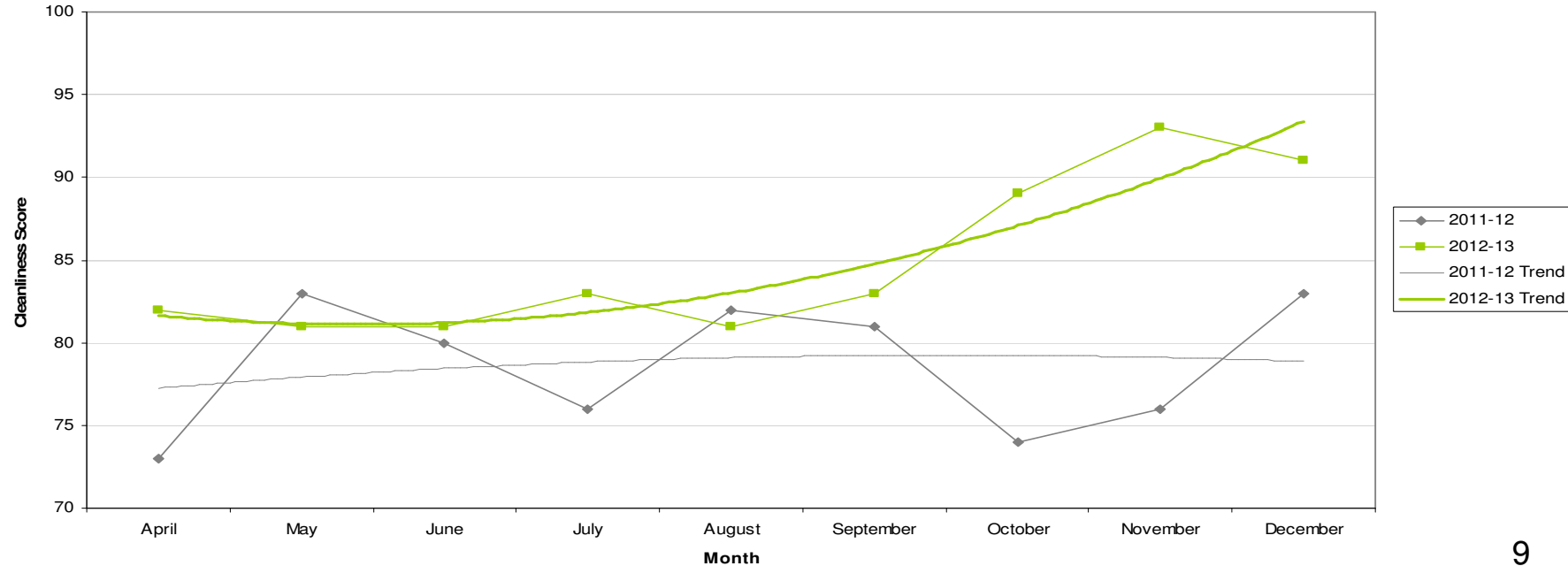


# Cleanliness Index

Cleanliness Index Score	<b>91</b>
Performance compared to previous year	↗
Performance compared to neighbourhoods target of 86	↗

- All data refers to a comparison with the previous year's month
- It is proposed that performance over time graphs be used for each indicator
- Historic data for comparison is not available for dog fouling

Cleanliness Index

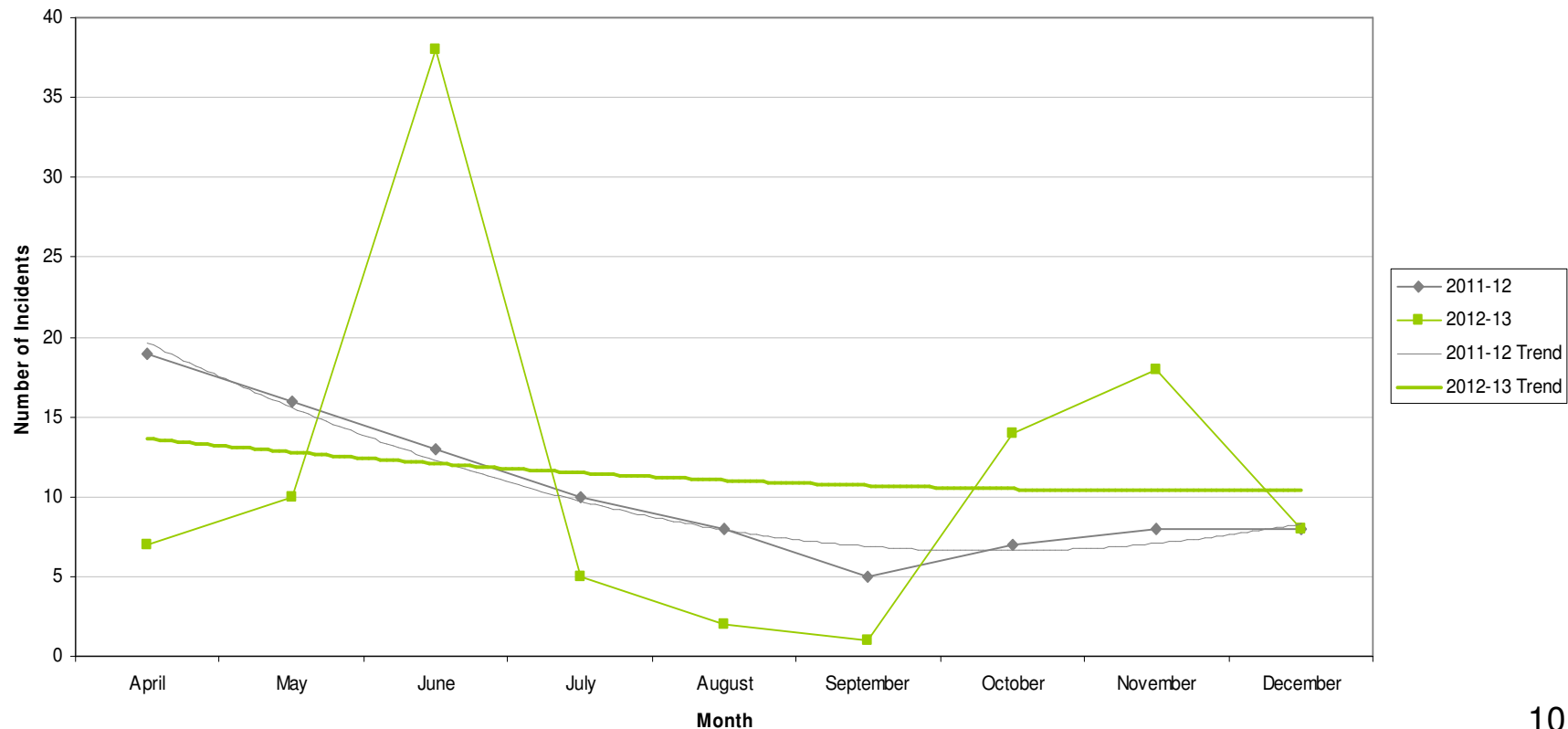


# Graffiti Reports

<b>RED</b>		
<b>AMBER</b>	<b>8 incidents</b>	<b>No change</b>
<b>GREEN</b>		

- All data refers to a comparison with the previous year's month
- It is proposed that performance over time graphs be used for each indicator
- Historic data for comparison is not available for dog fouling

Incidents of Graffiti

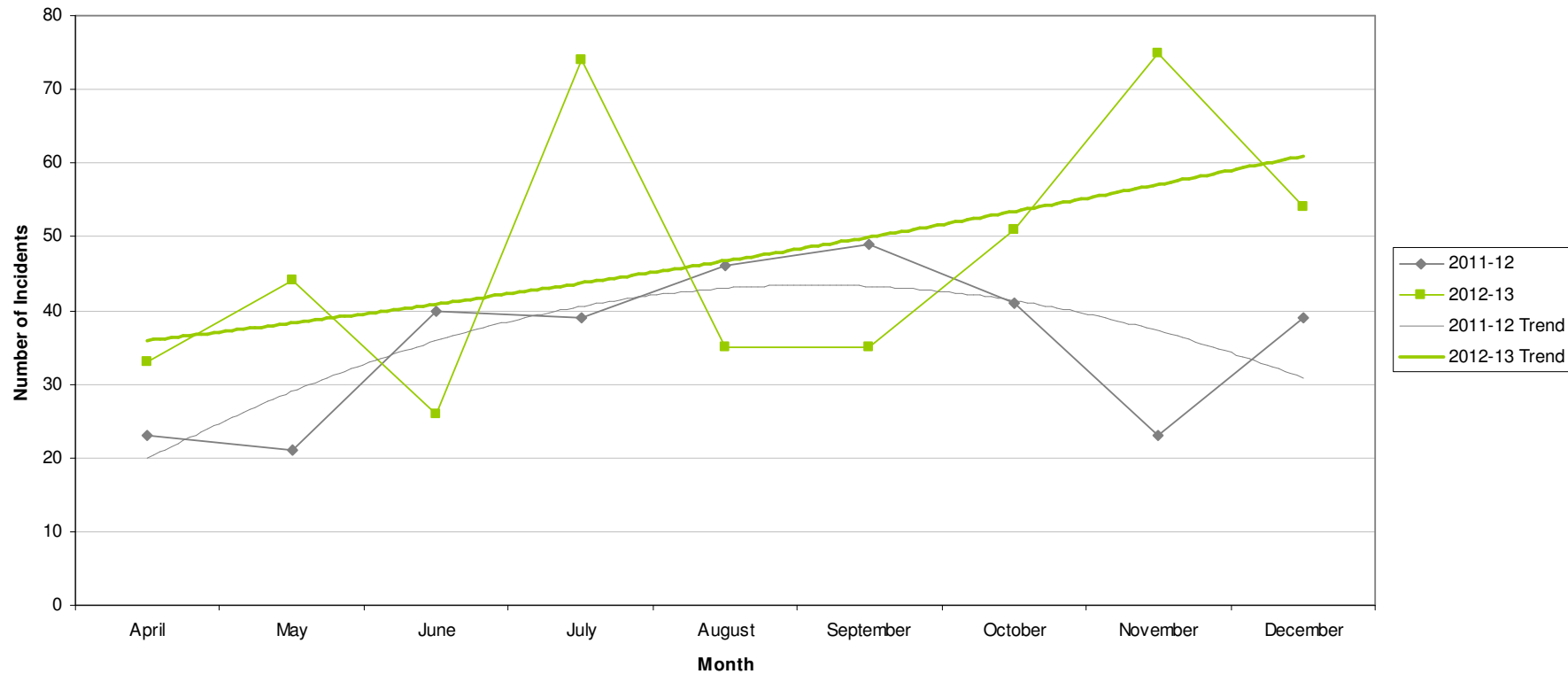


# Fly Tipping

<b>RED</b>	<b>54 incidents</b>	<b>Increase of 15</b>
<b>AMBER</b>		
<b>GREEN</b>		

- All data refers to a comparison with the previous year's month
- It is proposed that performance over time graphs be used for each indicator
- Historic data for comparison is not available for dog fouling

Incidents of Fly Tipping



# Unemployment Rate

Area	Nov-12			Change in last		Change in last year	
	Number	Rate	City Rank	Number	%	Number	%
Berridge	1,030	7.1	7	-11	-1.1	67	7
Dunkirk and Lenton	253	2.3	19	-7	-2.7	-20	-7.3
Radford and Park	754	4	17	-14	-1.8	-13	-1.7
Sherwood	544	5.1	13	2	0.4	-66	-10.8
Wollaton East and Lenton Abbey	143	1.4	20	4	2.9	5	3.6
Wollaton West	248	2.7	18	-6	-2.4	10	4.2
Aspley	1,174	10.4	1	34	3	-13	-1.1
Basford	728	6.5	10	21	3	36	5.2
Bestwood	1,009	8.9	3	22	2.2	19	1.9
Bilborough	750	7.2	6	5	0.7	-25	-3.2
Bulwell	1,061	9.7	2	44	4.3	34	3.3
Bulwell Forest	410	4.5	15	-19	-4.4	-45	-9.9
Leen Valley	335	4.8	14	-18	-5.1	-11	-3.2
Bridge	696	6.6	9	-11	-1.6	-24	-3.3
Clifton North	378	4.3	16	-9	-2.3	-23	-5.7
Clifton South	524	6	12	17	3.4	11	2.1
Dales	863	7.4	5	-1	-0.1	22	2.6
Mapperley	703	6.3	11	1	0.1	-3	-0.4
St Ann's	1,195	8.7	4	-39	-3.2	8	0.7

*This is an edited version of a report produced by: Geoff Oxendale, Information and Research Officer, Nottingham City Council*

# Housing

## Radford and Park Ward - Housing



### Anti-social behaviour - Hyson Green (Radford and Park Ward)

Indicator	Current Target	2010/11	2011/12	2012/13		
		Value	Value	Value	Status	Trend
% of ASB cases resolved - Hyson Green	97.6%	100%	97.53%	100%		
% of ASB cases resolved by first intervention - Hyson Green	75%	-	-	77.05%		n/a

### Empty properties - Radford and Park Ward

Indicator	Current Target	2010/11	2011/12	2012/13		
		Value	Value	Value	Status	Trend
Average void re-let time for Radford & Park Ward	26	24.34	35	33.59		
Lettable voids Radford & Park Ward	-	4	7	14		
Empty properties awaiting decommission in Radford & Park Ward	-	131	112	79		

### Estate star ratings (from Tenant Service Inspectors)

Indicator	2010/11		2011/12		2012/13		
	Value	Status	Value	Status	Value	Status	Trend
Estate star rating - Radford	2 Star		3 Star		3 Star		

Data prepared by Nottingham City Homes Performance Team

For more information please contact Tricia Quinn, Performance Review Manager on 0115 9157365 or Marcus Parton, Performance Review Officer 0115 915715

# Housing

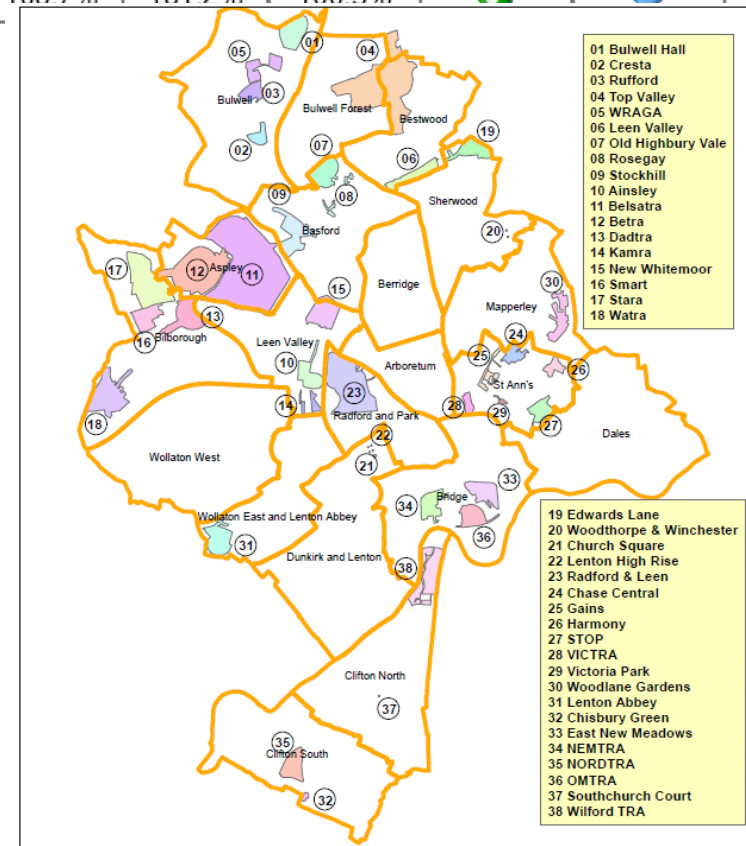
## Rent Collection - Hyson Green

Indicator	Current Target	2010/11	2011/12	2012/13		
		Value	Value	Value	Status	Trend
Rent charged that has been collected - Hyson green office area	100.2%	100.7%	101.2%	100.5%		

### Key:

- Performance on or exceeding target
- Performance below target
- Data only performance indicator
- Performance has improved compared to two years ago
- Performance has deteriorated compared to two years ago
- Performance unchanged

**Map of Tenants and Residents Associations by Ward**



# Community Protection

In December 2012 there were two court outcomes in Radford and Park. These comprised an Undertaking and an Assisted RSL or Private Landlord to obtain Possession Order.

*Data has been received from Community Protection and where postcodes have been listed these have been geo-coded and mapped to determine the Ward. All addresses relate to the address of the Perpetrator.*

*FPNs are not currently available at ward level.*



# Fire

Table: Fire Rate (per 1000 of population) by ward (previous 12 months)

Ward	All Fire		Property		Secondary		Rank
	Volume	Rate	Volume	Rate	Volume	Rate	
Arboretum	14	1.21	5	0.43	9	0.77	13
Aspley	68	3.90	13	0.75	55	3.16	2
Basford	62	3.84	12	0.74	50	3.10	3
Berridge	44	2.23	19	0.96	25	1.27	10
Bestwood	44	2.58	13	0.76	31	1.82	7
Bilborough	46	2.75	13	0.78	33	1.97	6
Bridge	37	3.63	6	0.59	31	3.04	4
Bulwell	91	5.51	25	1.51	66	4.00	1
Bulwell Forest	43	3.13	12	0.87	31	2.26	5
Clifton North	15	1.15	4	0.31	11	0.84	16
Clifton South	19	1.36	6	0.43	13	0.93	12
Dales	19	1.18	10	0.62	9	0.56	15
Dunkirk and Lenton	11	0.91	5	0.41	6	0.50	18
Leen Valley	25	2.30	3	0.28	22	2.02	9
Mapperley	16	1.06	8	0.53	8	0.53	17
Radford and Park	30	1.48	11	0.54	19	0.94	11
Sherwood	18	1.19	3	0.20	15	1.00	14
St. Ann's	31	2.40	9	0.70	22	1.70	8
Wollaton East and Lenton Abbey	8	0.69	1	0.09	7	0.61	19
Wollaton West	5	0.34	0	0.00	5	0.34	20
<b>Average Rate (of 20 Wards)</b>	<b>2.14</b>		<b>0.57</b>		<b>1.57</b>		

Key:

- Highest
- Second Highest
- Third Highest

Radford and Park ranks 11<sup>th</sup> highest out of the 20 wards for rate (per 1000 of population) of all intentional fire.

NB: Wards are ranked from 1 – 20 where 1 is the highest Rate and 20 is the lowest Rate.

# Methodology

Data has not been audited or verified and therefore must only be used as a reflection of crime.

Crime Data and ASB calls have been extracted from the Police systems and mapped to ascertain which Ward they occurred in.

Where possible the most recent data is used, although for some areas this may be a month further in arrears.

Discussions continue with other agencies regarding what further data can be included.